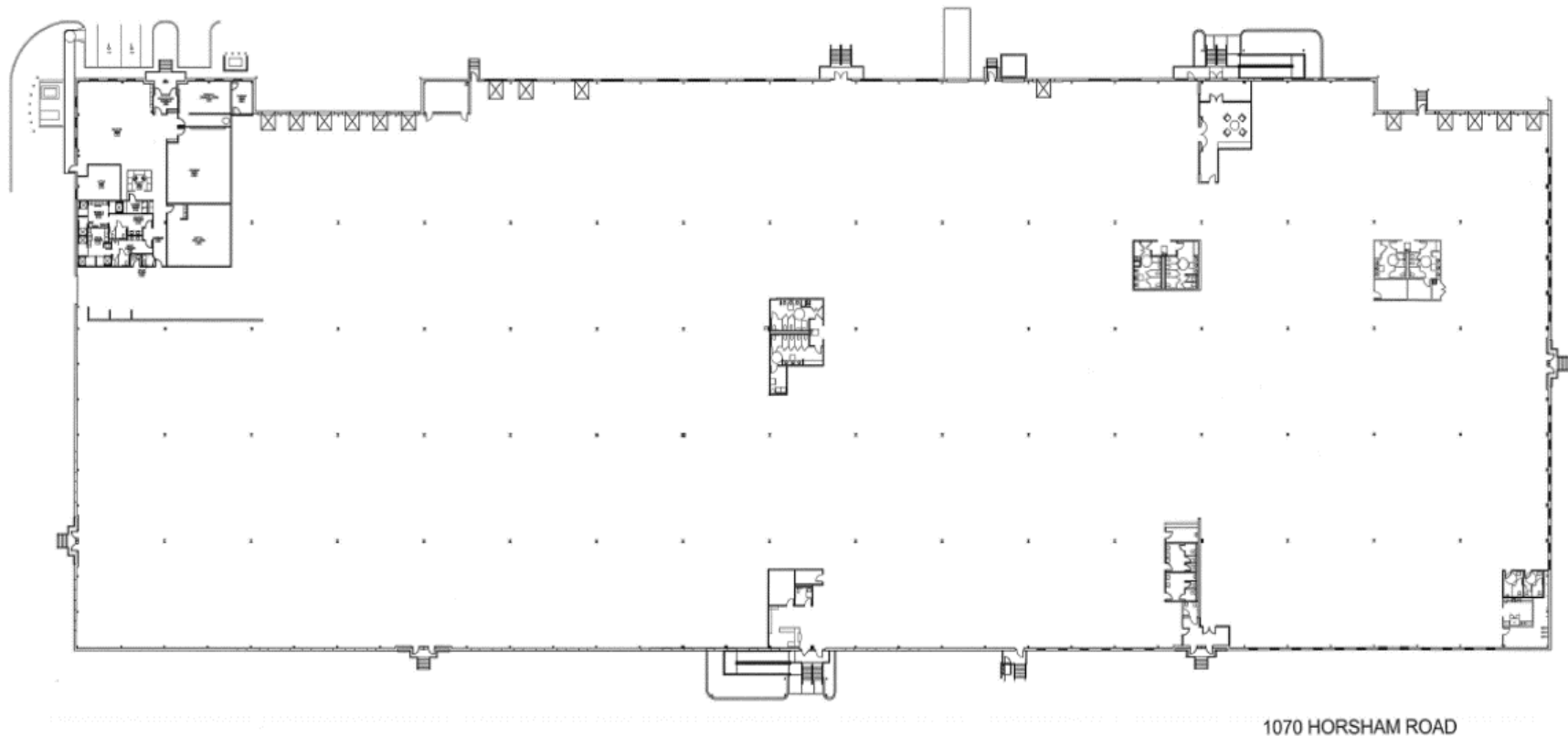


# FOR LEASE - 164,740 SQUARE FEET

1070 Horsham Road, North Wales, PA





**SQUARE FEET**  
164,740 S.F.

**CEILING HEIGHT**  
26' CLEAR AT LOW SIDE

**SPRINKLER**  
100% WET SYSTEM

**BATHROOMS**  
ADA RESTROOMS

**ZONING**  
LIGHT INDUSTRIAL

**POWER**  
2,000 AMPS; 277/480  
VOLTS; 3 PHASE

**COLUMN SPACING**  
40' X 45'

**LIGHTING**  
METAL HALIDE

**BUILDING DIMENSIONS**  
684' X 244'

**OFFICE SPACE**  
5,500 S.F.

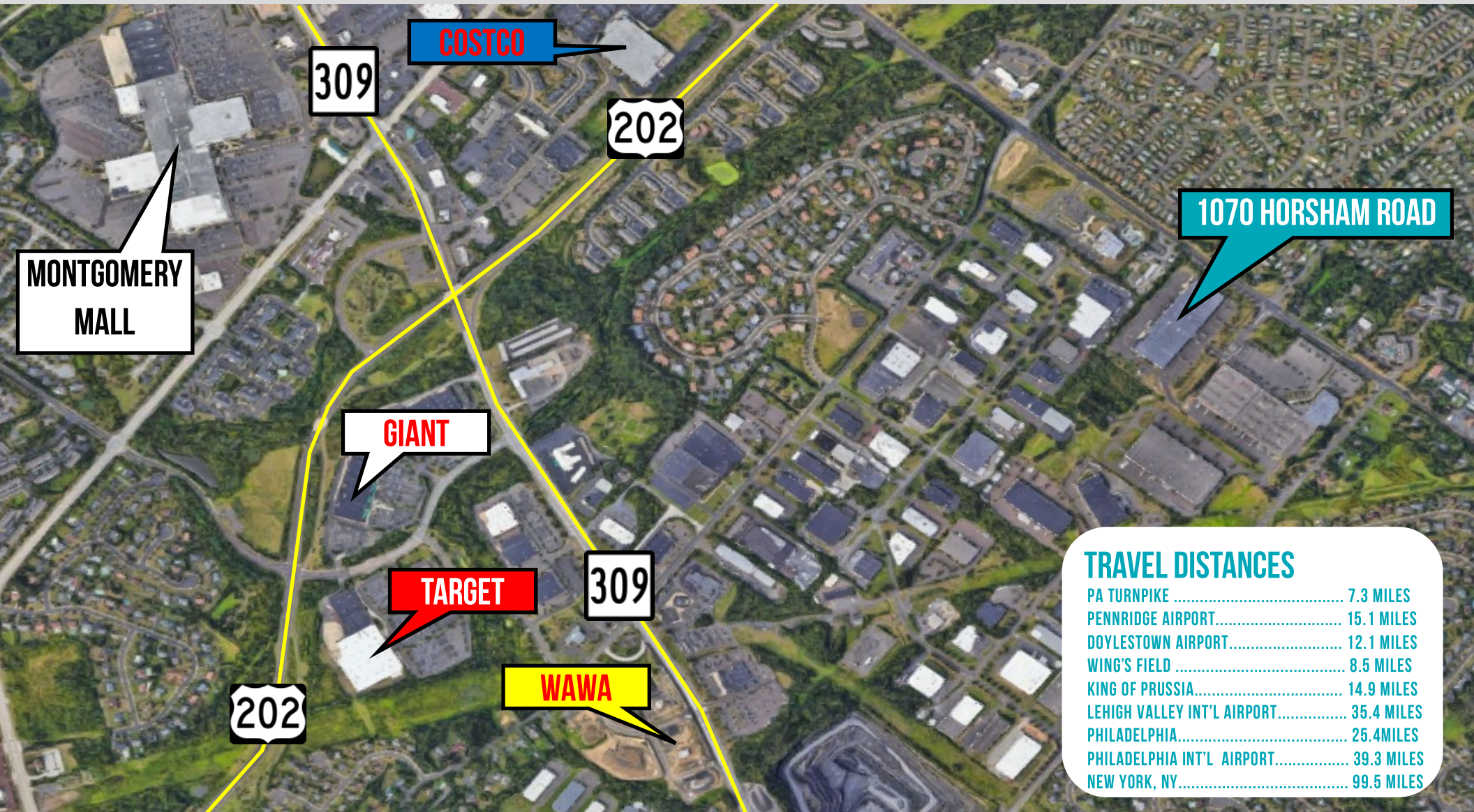
**LOADING**  
16 TAILGATES  
WITH LEVELERS;  
2 DRIVE-INS

**PARKING**  
APPROXIMATELY 240 SPACES

[illegible]



# AREA MAP



## TRAVEL DISTANCES

PA TURNPIKE .....	7.3 MILES
PENNRIDGE AIRPORT.....	15.1 MILES
DOYLESTOWN AIRPORT.....	12.1 MILES
WING'S FIELD .....	8.5 MILES
KING OF PRUSSIA.....	14.9 MILES
LEHIGH VALLEY INT'L AIRPORT.....	35.4 MILES
PHILADELPHIA.....	25.4MILES
PHILADELPHIA INT'L AIRPORT.....	39.3 MILES
NEW YORK, NY.....	99.5 MILES



# AERIAL MAP

