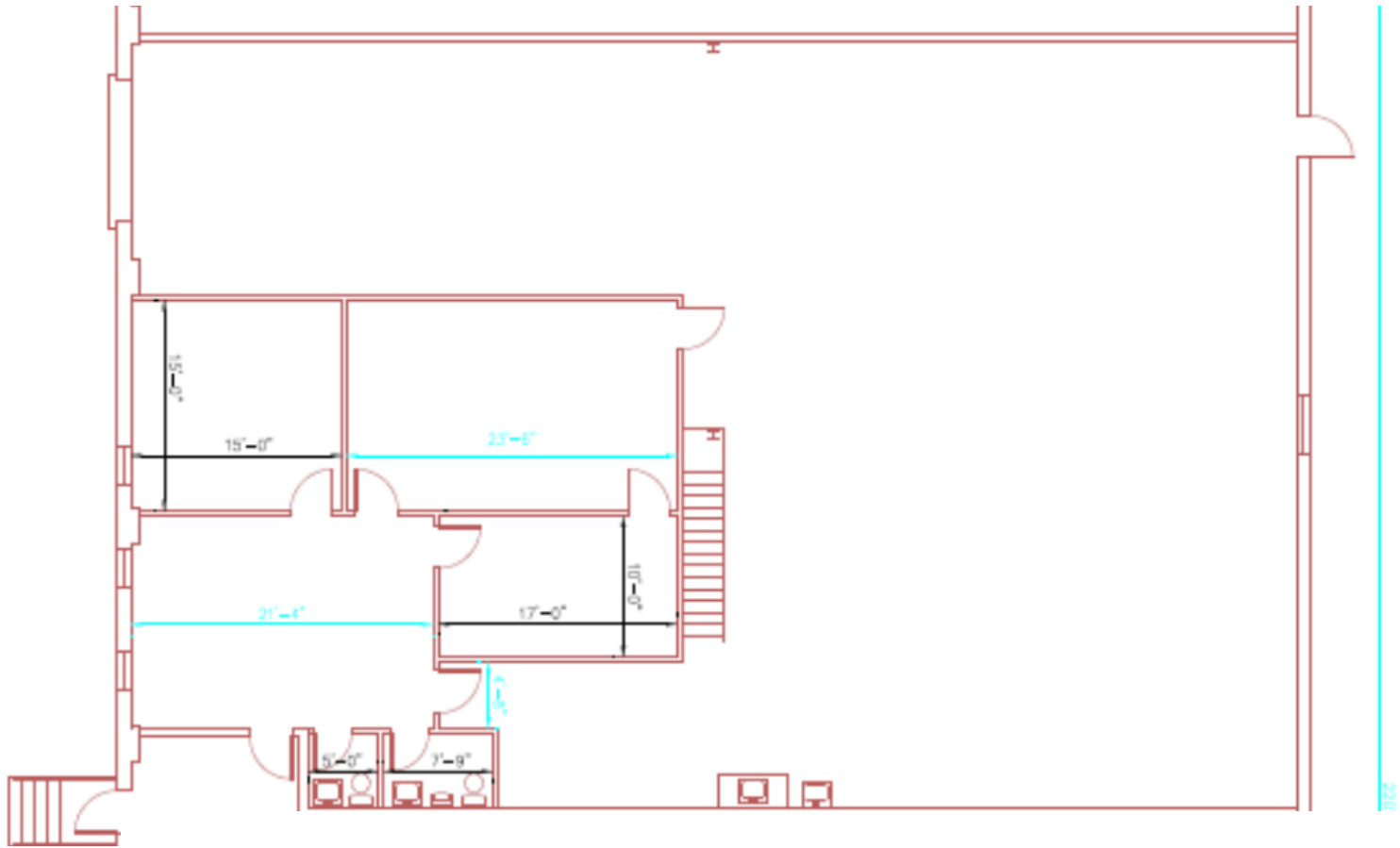


FOR LEASE - 4,675 SQUARE FEET

114 Keystone Drive, Montgomeryville, PA





SQUARE FEET
4,675 S.F.

CEILING HEIGHT
16' CLEAR AT LOW SIDE

SPRINKLER
100% WET SYSTEM

BATHROOMS
1 MEN'S & 1 WOMEN'S

ZONING
LIGHT INDUSTRIAL

POWER
200 AMPS; 120/208 VOLTS;
3 PHASE

COLUMN SPACING
42'6" X 27'6"

LIGHTING
METAL HALIDE IN WAREHOUSE

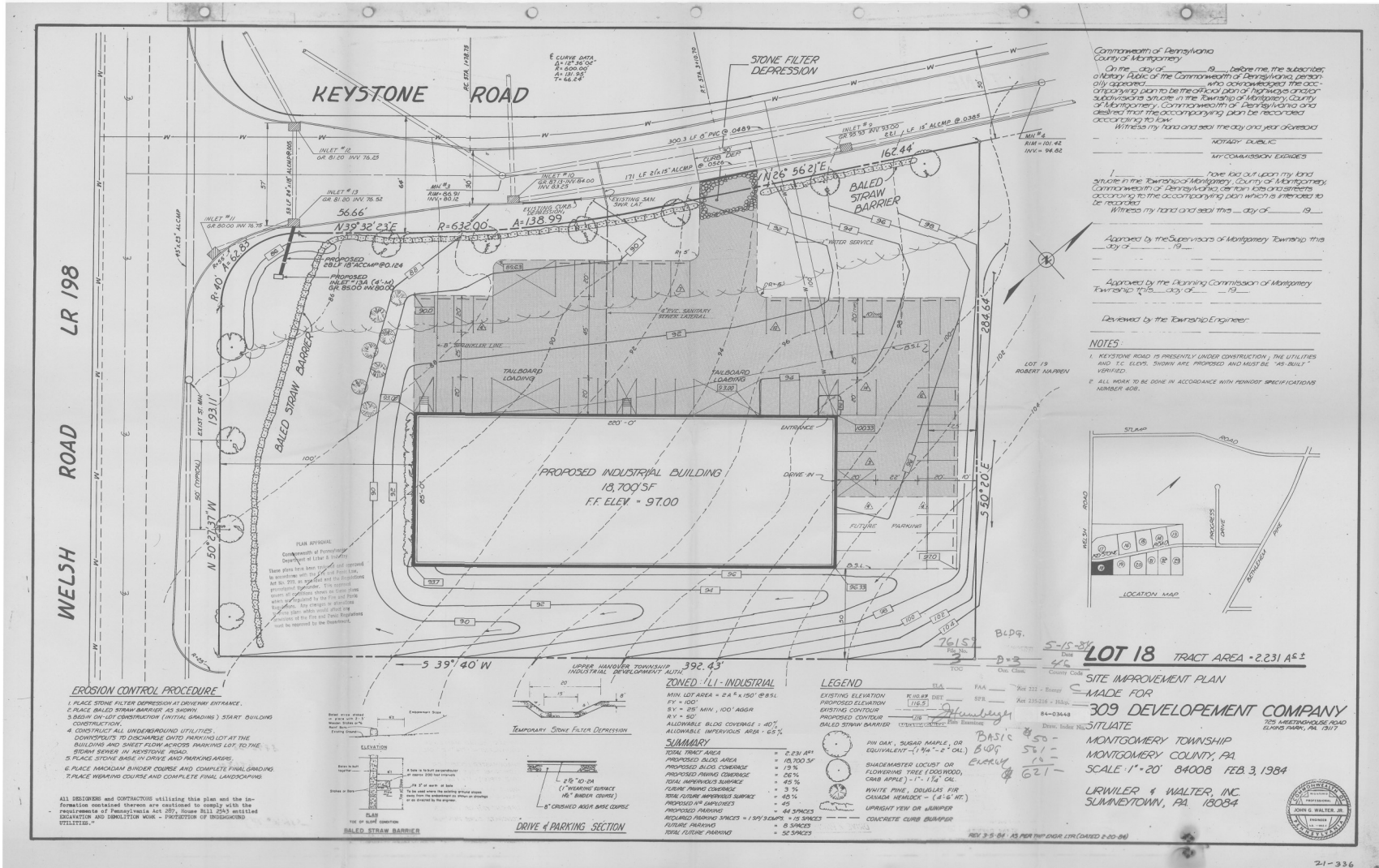
SPACE DIMENSIONS
55' X 85'

OFFICE SPACE
1,250 S.F.

LOADING
1 TAILGATE

PARKING
AMPLE

SITE PLAN



Commonwealth of Pennsylvania
County of Montgomery

On this day of _____ 19____ before me, the subscriber, a Notary Public in the Commonwealth of Pennsylvania, personally appeared _____ who acknowledged the accompanying plan to be the official plan of highways and/or subdivisions situate in the Township of Montgomery County of Montgomery, Commonwealth of Pennsylvania and declared that the accompanying plan will be recorded according to law.

Witness my hand and seal this day and year aforesaid.

NOTARY PUBLIC
MY COMMISSION EXPIRES _____

I have laid out upon my land situate in the Township of Montgomery, County of Montgomery, Commonwealth of Pennsylvania, which certain lots and streets according to the accompanying plan which is intended to be recorded.

Witness my hand and seal this day of _____ 19____

Approved by the Supervisors of Montgomery Township this day of _____ 19____

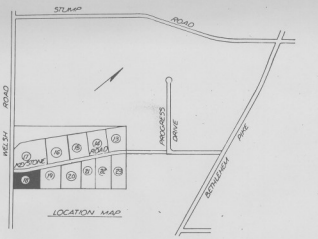
Approved by the Planning Commission of Montgomery Township this day of _____ 19____

Reviewed by the Township Engineer _____

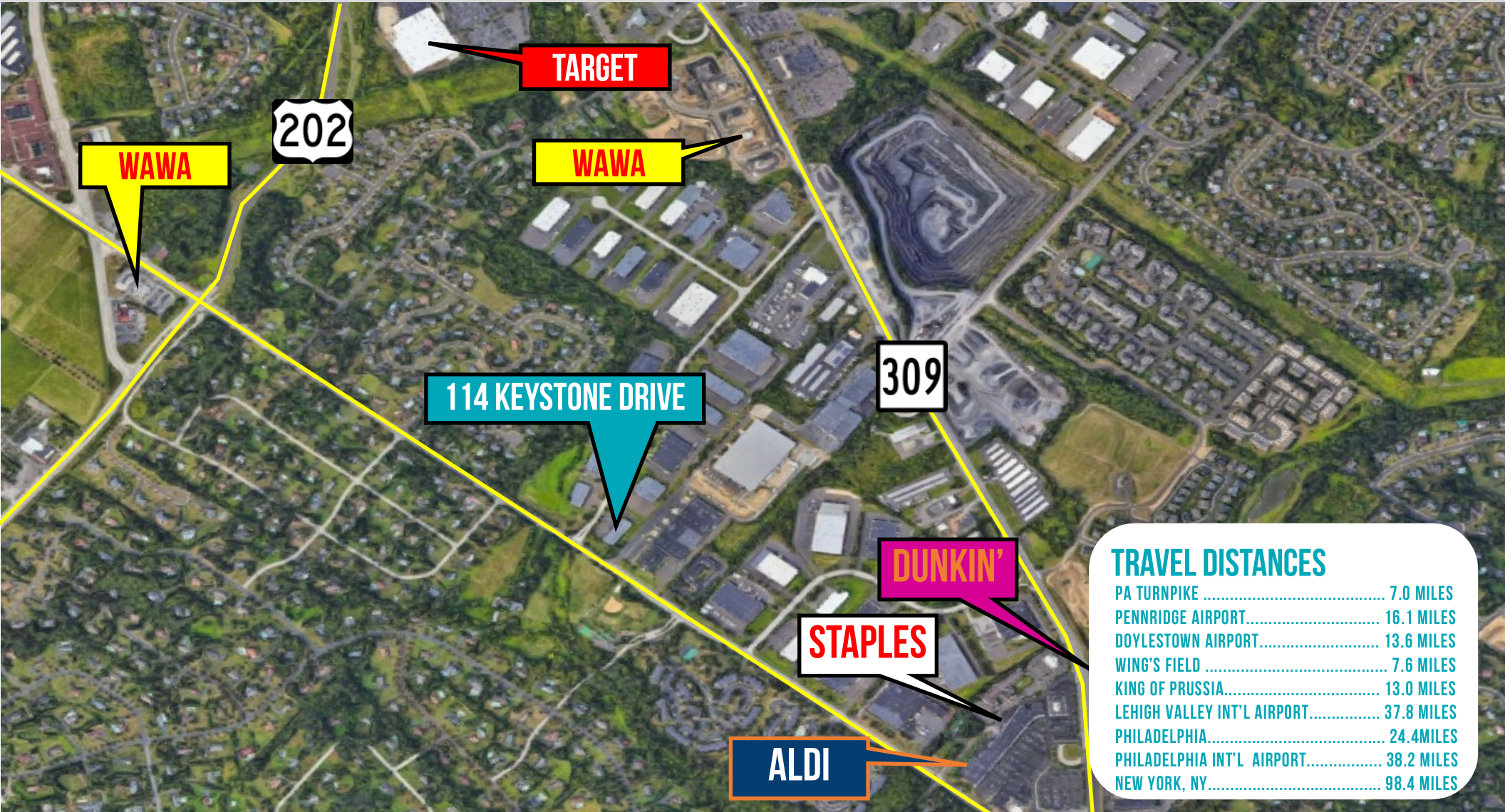
NOTES

1. KEYSTONE ROAD IS PRESENTLY UNDER CONSTRUCTION, THE UTILITIES AND T.C. ELEV. SHOWN ARE PROPOSED AND MUST BE "AS-BUILT" VERIFIED.

2. ALL WORK TO BE DONE IN ACCORDANCE WITH POINT SPECIFICATIONS NUMBER 408.



AREA MAP



AERIAL MAP

