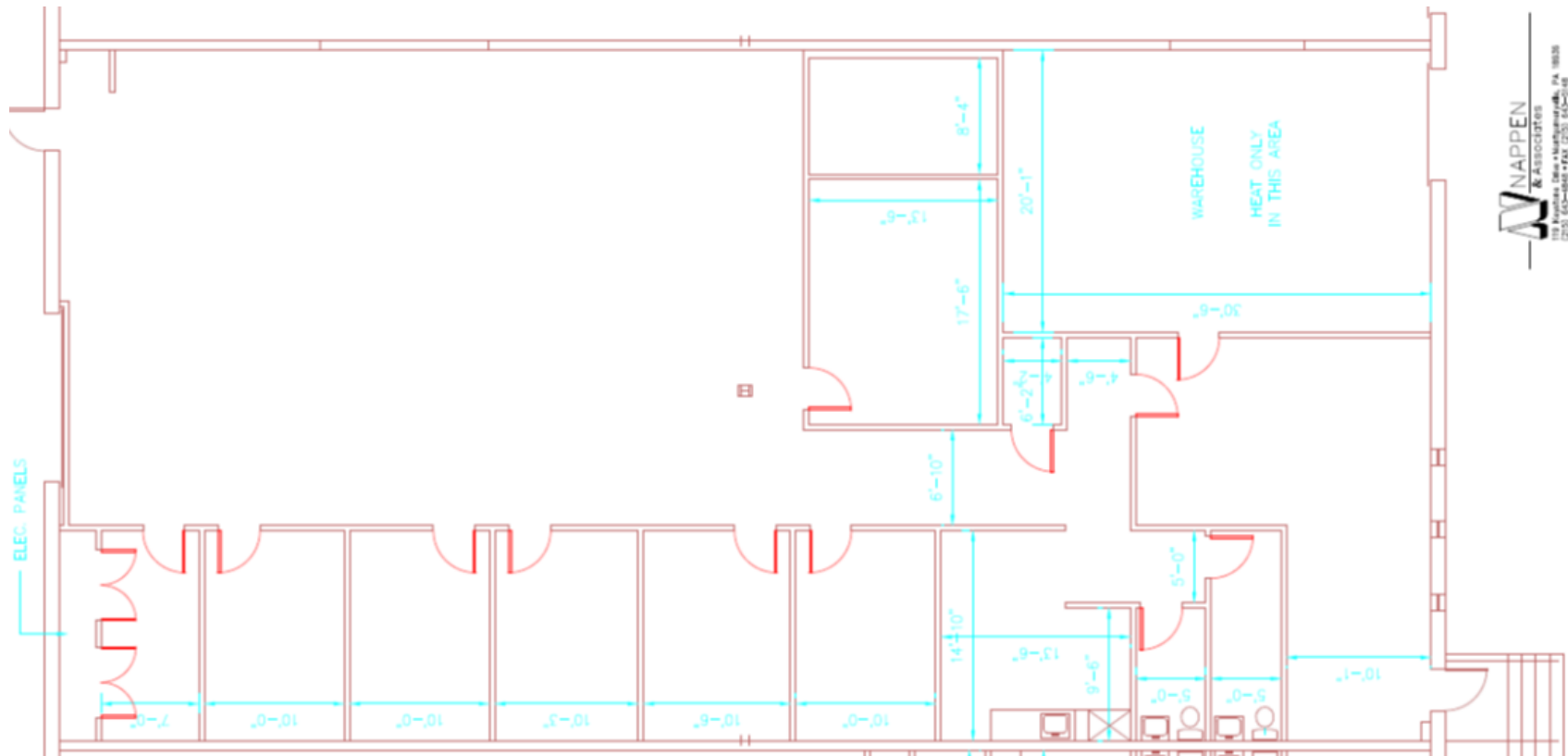


# FOR LEASE - 5,000 SQUARE FEET

212C Progress Drive, Montgomeryville, PA





**W** NAPPEN  
 & ASSOCIATES  
 REAL ESTATE BROKERS  
 (215) 662-8887 FAX (215) 662-5148

**SQUARE FEET**  
 5,000 S.F.

**CEILING HEIGHT**  
 16' CLEAR AT LOW SIDE

**SPRINKLER**  
 100% WET SYSTEM

**BATHROOMS**  
 1 MEN'S & 1 WOMEN'S

**ZONING**  
 LIGHT INDUSTRIAL

**POWER**  
 200 AMPS; 277/480 VOLTS;  
 3 PHASE

**COLUMN SPACING**  
 25' X 50'

**LIGHTING**  
 FLUORESCENT

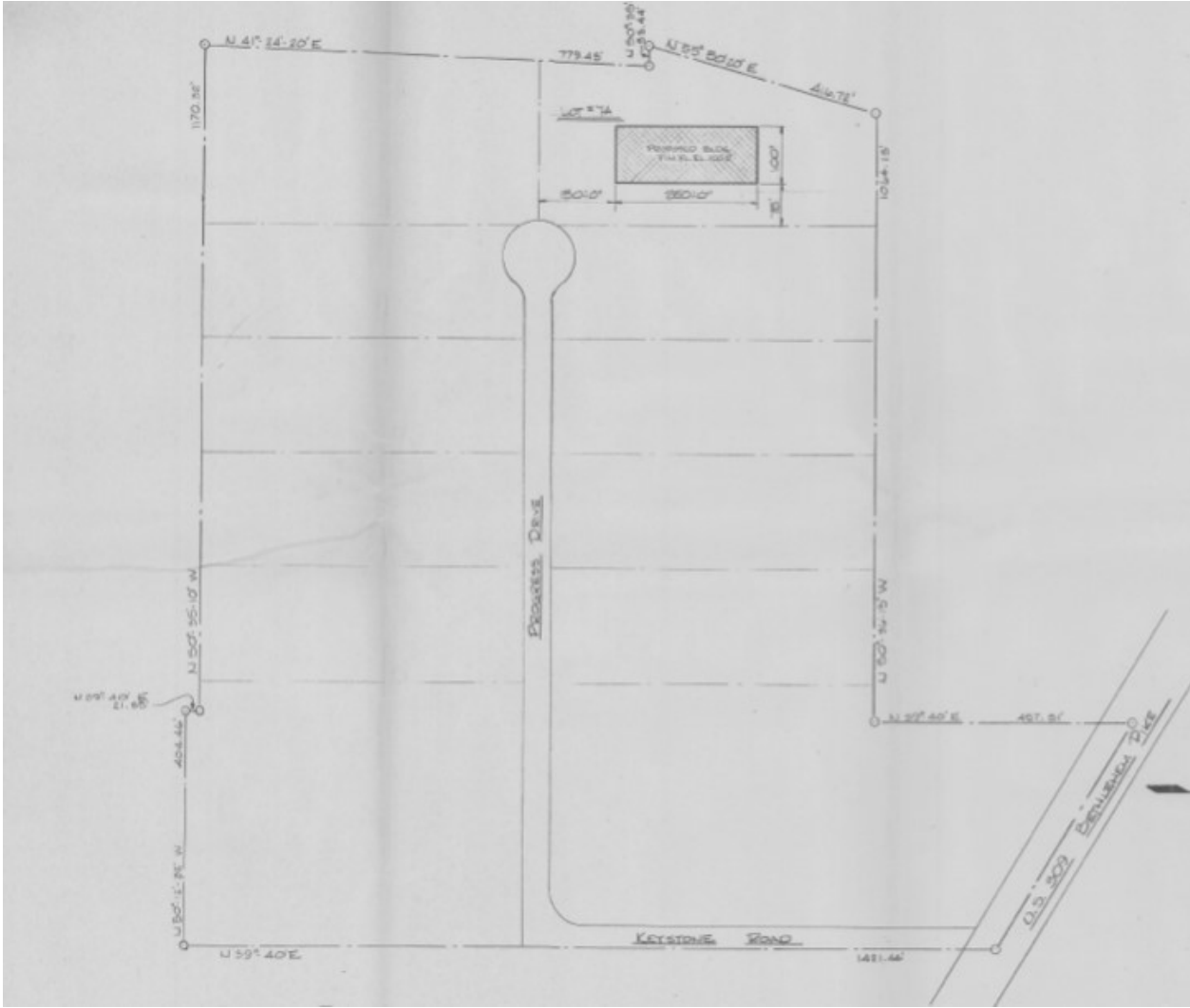
**SPACE DIMENSIONS**  
 50' X 100'

**OFFICE SPACE**  
 4,480 S.F.

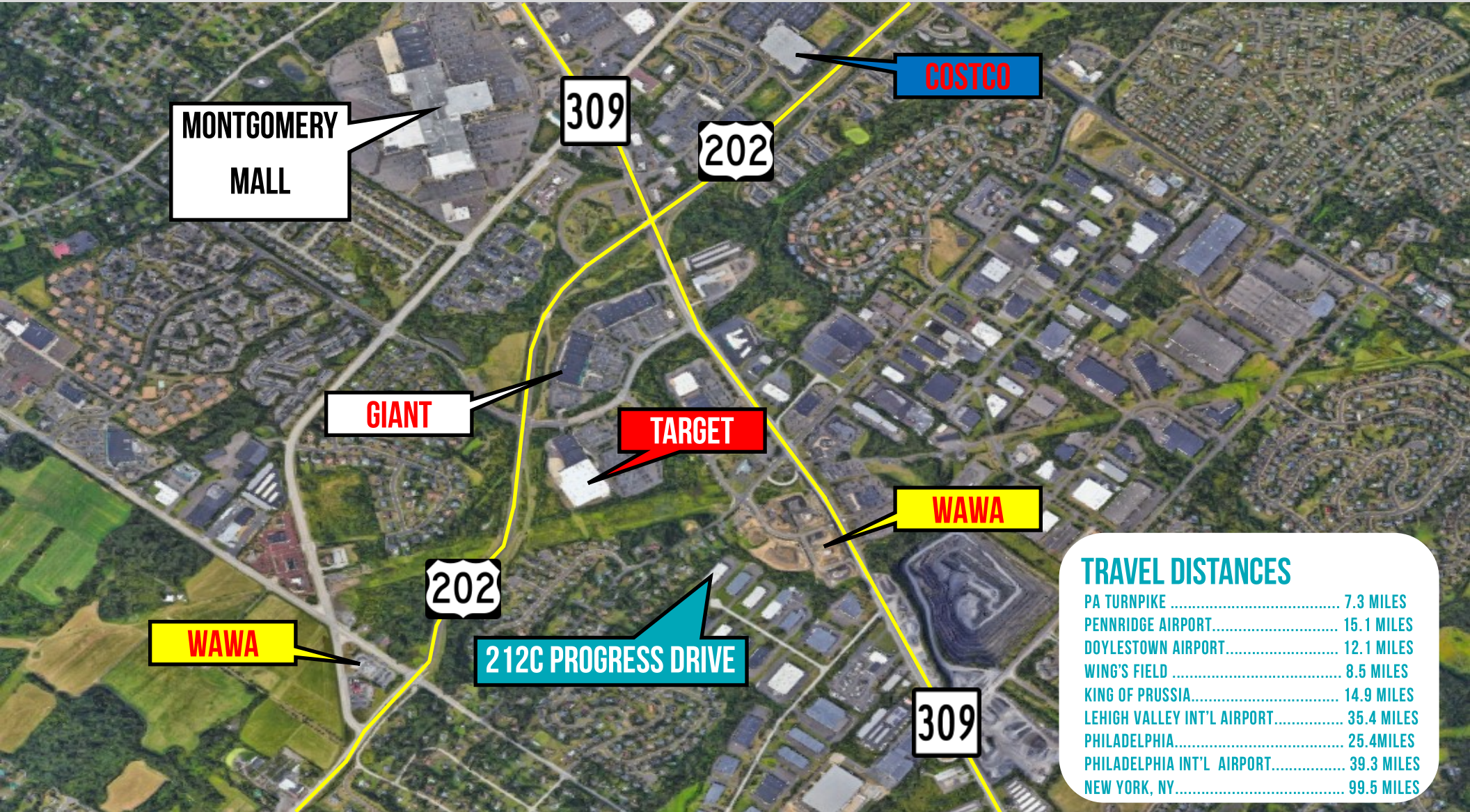
**LOADING**  
 1 TAILGATE

**FLOOR**  
 6" REINFORCED CONCRETE

# SITE PLAN



# AREA MAP



TRAVEL DISTANCES	
PA TURNPIKE .....	7.3 MILES
PENNRIDGE AIRPORT.....	15.1 MILES
DOYLESTOWN AIRPORT.....	12.1 MILES
WING'S FIELD .....	8.5 MILES
KING OF PRUSSIA.....	14.9 MILES
LEHIGH VALLEY INT'L AIRPORT.....	35.4 MILES
PHILADELPHIA.....	25.4MILES
PHILADELPHIA INT'L AIRPORT.....	39.3 MILES
NEW YORK, NY.....	99.5 MILES

# AERIAL MAP

